

MONTHLY MEMBERSHIP PROGRESS REPORT

District 14 N

Results as of: 6/30/2024

GMT:

LOCATION PENNSYLVANIA

GMT CA

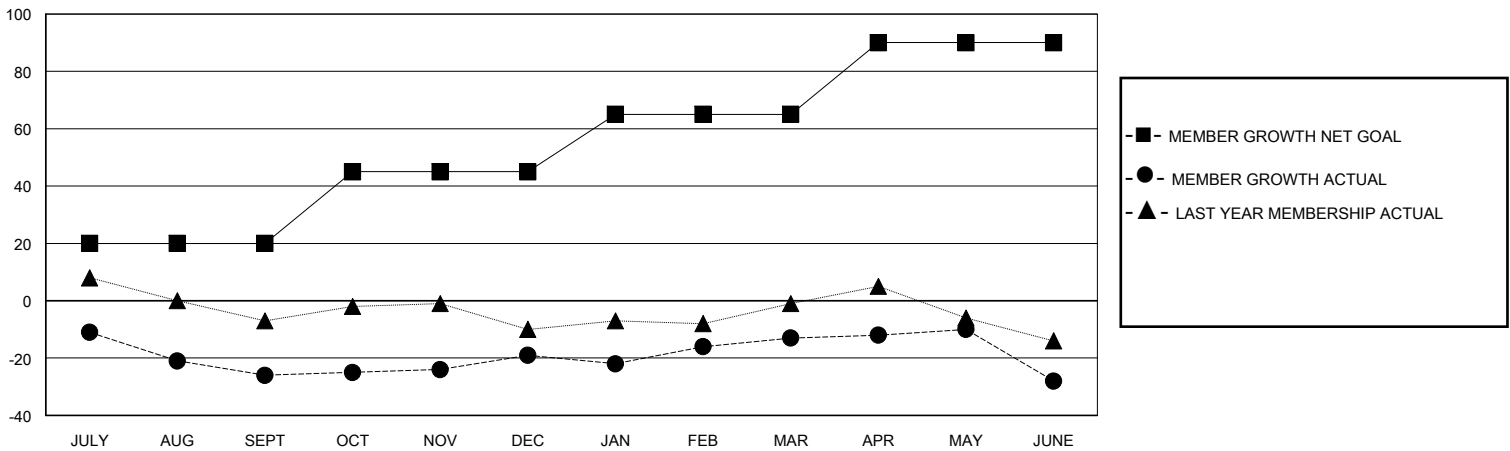
Clubs			
RESULTS FOR 2023-2024			
QUARTER	NEW CLUB GOAL	NEW CLUBS	DROPPED CLUBS
JULY/AUG/SEPT	0	0	0
OCT/NOV/DEC	0	0	0
JAN/FEB/MAR	1	0	0
APR/MAY/JUNE	0	0	0

Members			
RESULTS FOR 2023-2024			
QUARTER	MEMBER GROWTH NET GOAL	MEMBER GROWTH ACTUAL	DROPPED MEMBERS ACTUAL (including transfers)
JULY/AUG/SEPT	20	17	41
OCT/NOV/DEC	25	36	19
JAN/FEB/MAR	20	24	11
APR/MAY/JUNE	25	17	31

GOALS AND ACTUAL NEW CLUBS CUMULATIVE



GOALS AND ACTUAL MEMBERS CUMULATIVE



DROPPED CLUBS: 0	18 CLUBS OF 37 ADDED 1 OR MORE NEW MEMBERS	GENDER DISTRIBUTION
		MALE 645 (69.58%)
		FEMALE 282 (30.42%)
DROPPED MEMBERS	CLICK HERE FOR CUMULATIVE MEMBERSHIP DATA	TOTAL FAMILY UNIT MEMBERS 188
DECEASED 13		FAMILY MEMBERS PAYING HALF DUES 99
CLUB CANCELLED 0		
OTHER 89		
TOTAL 102		